



Belgrade Orienteering Association

is inviting you to the

**22nd Belgrade Trophy in
Orienteering,**

2 World Ranking Events (WRE)

and

**2 Rounds of Serbian
Orienteering League**

– Bulletin 3 –

The 30th and the 31st of March 2024



Director of the competition: Dejan Nikolić, president of the Belgrade orienteering association

Technical director: Sava Lazić, Secretary General of the Belgrade orienteering association

Locations:

Day 1 - Block 30 (Novi Beograd)

- ∞ **competition centre day 1: „PIN Escape rooms 3“ - <https://maps.app.goo.gl/4qPrYKkuLuqoNbQM7>**
- ∞ **public transport buses: 17, 68, 70 – station „Bulevar umetnosti“ or 71 – station „Bulevar Zorana Đinđića“**

Day 2 - Lipovička šuma (Lipovička forest)

- ∞ **competition centre day 2: Restaurant „Lipovačka šuma“ - <https://shorturl.at/gFKTU>**
- ∞ **public transport buses: 551, 560, 581, 581A, 583A, 585, 586, 588, 591, 592, 593, 593A, 860D, 860V, 860P, 860Š – station „Lipovica (policija)“ + 550m by foot**

Schedule:

Day 1 – sprint distance:

- ∞ **09:00 opening of the competition centre**
- ∞ **10:00 opening ceremony and the team leader`s meeting**
- ∞ **10:30 start of quarantine (warm up & cool down zone)**
- ∞ **11:00 first start**
- ∞ **13:30 awards ceremony (WRE)**
- ∞ **Terrain description: mixture of buildings with passages, pedestrian bridges, different types of vegetations and open area**



Day 2 – middle distance:

- ∞ **09:00 opening of the competition centre**
- ∞ **10:00 opening ceremony and the team leader`s meeting**
- ∞ **11:00 first start**
- ∞ **13:30 awards ceremony (WRE + sum of 2 days)**

Terrain description: forest of different runnability level, reduced network of paths, pretty light and fast terrain with some relief details such as earth objects

IOF adviser: Vujadin Žagar

Maps:

- **Blok 30 [NEW]**
 - **scale: 1:4000 and 1:3000, E=1m**
 - **status: January-March 2024**
 - **fieldwork and cartography: Sava Lazić**
- **Lipovička šuma – restoran [NEW]**
 - **scale: 1:10.000 and 1:7.500, E=5m**
 - **status: February-March 2024**
 - **fieldwork and cartography: Mile Stevanović**
 - **basemap: LIDAR**

Fees:

- ∞ **20 euros for the categories M/W 12-20 and Open**
- ∞ **30 euros for the categories M/W 21-70**
- ∞ **Si card renting: 5 euros**

Entry deadline: Monday, the 25th of March 2024





Entries:

- ∞ **via orienteeringonline: <https://shorturl.at/kORSW>**
- ∞ **or bgorientiring@gmail.com**
- ∞ **M/W 21 elite categories must enter also via IOF Eventor**

Categories: M/W 12, 14, 16, 18, 20, 21A, 21B, 21E, 35, 45, 55, 65, 70, Open B, Open C

Awards:

- ∞ **for the first 3 competitors in all categories – medals and diplomas**
- ∞ **for the World ranking event (WRE) winners and bearers of Belgrade Trophy categories – special trophies + diplomas for the first 6 ranked at WRE**

Time keeping: Sport ident (SI air for the sprint will be turned on. For the middle distance will be classic Sport ident punching)

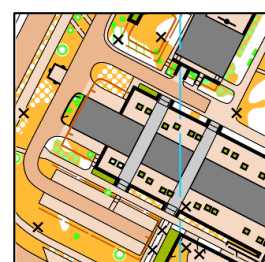
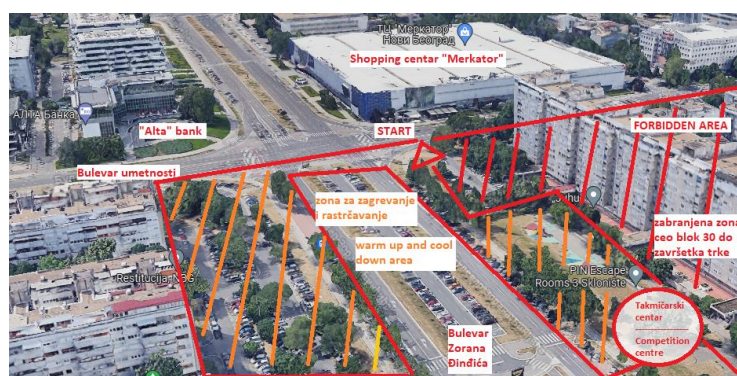
Accommodation:

- ∞ **<https://cutt.ly/PIvIVKq>**
- ∞ **<https://tob.rs/en>**

Meal possibilities for the 2nd day: (1) domestic beans + salad + bread = 550 RSD (about 5 euros), (2) barbecue + side dish + salad + bread = 550 RSD (about 5 euros)

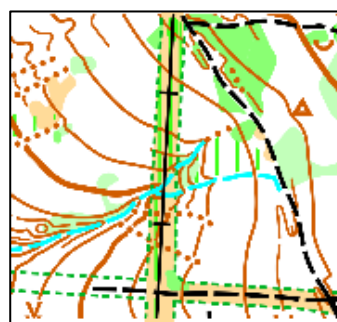
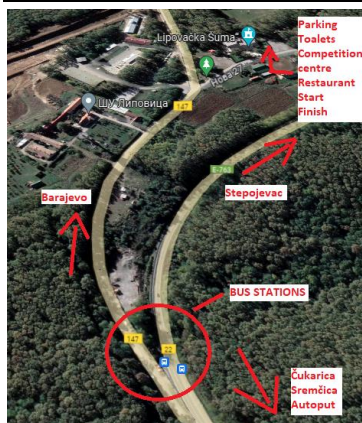
Course lengths for the 1st day:

Category	Course length	Number of control points	Map scale
M12	1.5 KM	12	1:3000
M14	2.2 KM	16	1:3000
M16	2.5 KM	18	1:4000
M18	2.8 KM	19	1:4000
M20	3.0 KM	23	1:4000
M21E	3.4 KM	27	1:4000
M21A	3.0 KM	23	1:4000
M21B	2.8 KM	19	1:4000
M35	3.0 KM	23	1:4000
M45	2.8 KM	19	1:4000
M55	2.5 KM	18	1:3000
M65	2.4 KM	16	1:3000
M70	2.2 KM	16	1:3000
W12	1.5 KM	12	1:3000
W14	2.0 KM	12	1:3000
W16	2.3 KM	15	1:4000
W18	2.5 KM	18	1:4000
W20	2.8 KM	19	1:4000
W21E	3.0 KM	23	1:4000
W21A	2.8 KM	19	1:4000
W21B	2.4 KM	16	1:4000
W35	2.8 KM	19	1:4000
W45	2.5 KM	18	1:4000
W55	2.4 KM	16	1:3000
W65	2.2 KM	16	1:3000
W70	2.0 KM	12	1:3000
Open B (harder)	2.0 KM	12	1:3000
Open C (easier)	1.5 KM	12	1:3000



Course lengths for the 2nd day:

Category	Course length	Number of control points	Climb	Map scale
M12	1.9 KM	11	70 M	1:7500
M14	2.4 KM	12	115 M	1:7500
M16	2.9 KM	15	125 M	1:10000
M18	3.4 KM	15	150 M	1:10000
M20	3.8 KM	17	190 M	1:10000
M21E	4.3 KM	18	230 M	1:10000
M21A	3.8 KM	17	190 M	1:10000
M21B	3.4 KM	15	150 M	1:10000
M35	3.8 KM	17	190 M	1:10000
M45	3.4 KM	15	150 M	1:10000
M55	2.9 KM	15	125 M	1:7500
M65	2.6 KM	14	125 M	1:7500
M70	2.4 KM	12	115 M	1:7500
W12	1.9 KM	11	70 M	1:7500
W14	2.2 KM	11	90 M	1:7500
W16	2.5 KM	13	110 M	1:10000
W18	2.9 KM	15	125 M	1:10000
W20	3.4 KM	15	150 M	1:10000
W21E	3.8 KM	17	190 M	1:10000
W21A	3.4 KM	15	150 M	1:10000
W21B	2.6 KM	14	125 M	1:10000
W35	3.4 KM	15	150 M	1:10000
W45	2.9 KM	15	125 M	1:10000
W55	2.6 KM	14	125 M	1:7500
W65	2.4 KM	12	115 M	1:7500
W70	2.2 KM	11	90 M	1:7500
Open B (harder)	2.2 KM	11	90 M	1:7500
Open C (easier)	1.9 KM	11	70 M	1:7500





Important notes:

- ∞ with the day of the publishing this bulletin, competition area is forbidden for any orienteering activities and trainings
- ∞ Map with embargo and allowed areas can be found at: <https://shorturl.at/dGHQ2>
- ∞ Old map of forest area can be found at: <https://shorturl.at/rtEY2>
- ∞ Maps will be printed on waterproof paper
- ∞ Control descriptions will be at the map and the spare one in the 2nd start box

City of Belgrade – The Secretariat for sport and youth contributed significantly to the Realization of the 22nd Belgrade Trophy in orienteering by providing the necessary funds for its financing

